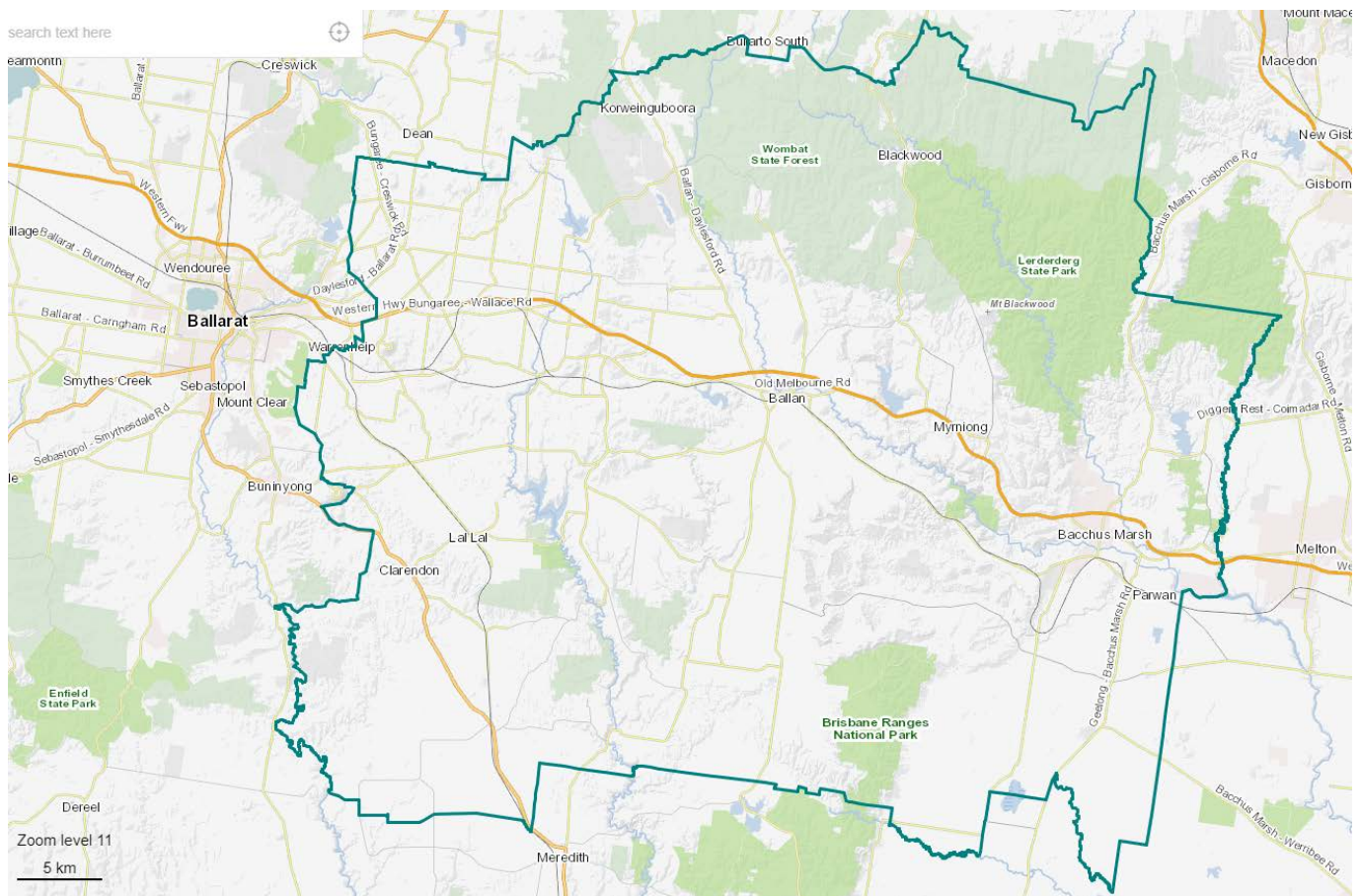

SPECIFICATION

Moorabool Shire Council Profile

Moorabool Shire Council is a fast-growing peri-urban municipality nestled between Melbourne, Geelong and Ballarat. It offers residents picturesque and friendly surrounds with the vibrancy of an active, growing community.

A stunning shire spanning more than 2,110 square kilometres, Moorabool is made up of 64 localities, hamlets and towns. More than 74% of the Shire comprises of water catchments, state forests and national parks.



Map 1: Moorabool Shire (blue outline shows municipal boundary)

Project Profile

It is anticipated that Moorabool will undergo significant development over the next 20 years. Current estimates are that the population will increase by approximately 81.34% from 35,203 residents in 2020 to 63,838 in 2041. This growth will be most pronounced in Bacchus Marsh and Ballan with an estimated growth of 108%, from 25,380 residents in 2020 to 52,909 by 2041 (Profile Id). While the growth in the rural areas of the shire is not expected to be as significant there is a need for Council to plan and respond to the current and future open space needs of these communities as well.

The project aims to build on the recently adopted Bacchus Marsh and Ballan Open Space Framework and Community Infrastructure Framework, which provided high level objectives for open space and accessibility requirements.

In addition, the strategy will inform the work currently being undertaken by the Victorian Planning Authority (VPA) and Council relating to the development of Precinct Structure Plans (PSPs) for Merrimu and Parwan Station. The PSPs anticipated to be placed on exhibition in early 2021.

In addition, a Development Plan (DP) is currently being prepared for Hopetoun Park North by developer.

Development interest is beginning to increase in Ballan in response to the Ballan Strategy Directions – this is expected to proceed to DPs being developed for a number of the growth precincts over the next 6-12 months.

The Project

The project aims to provide a clear direction for Council in relation to the planning for open space across the shire (map 1), including in greenfield development areas in Bacchus Marsh and Ballan (maps 2 and 3). The project will review existing Council and State strategies and policies with the aim to provide a municipal wide open space strategy to ensure that Council meets the needs of the community today and into 2041. The strategy will be inform the update on the Recreation & Leisure Strategy 2015-2021.

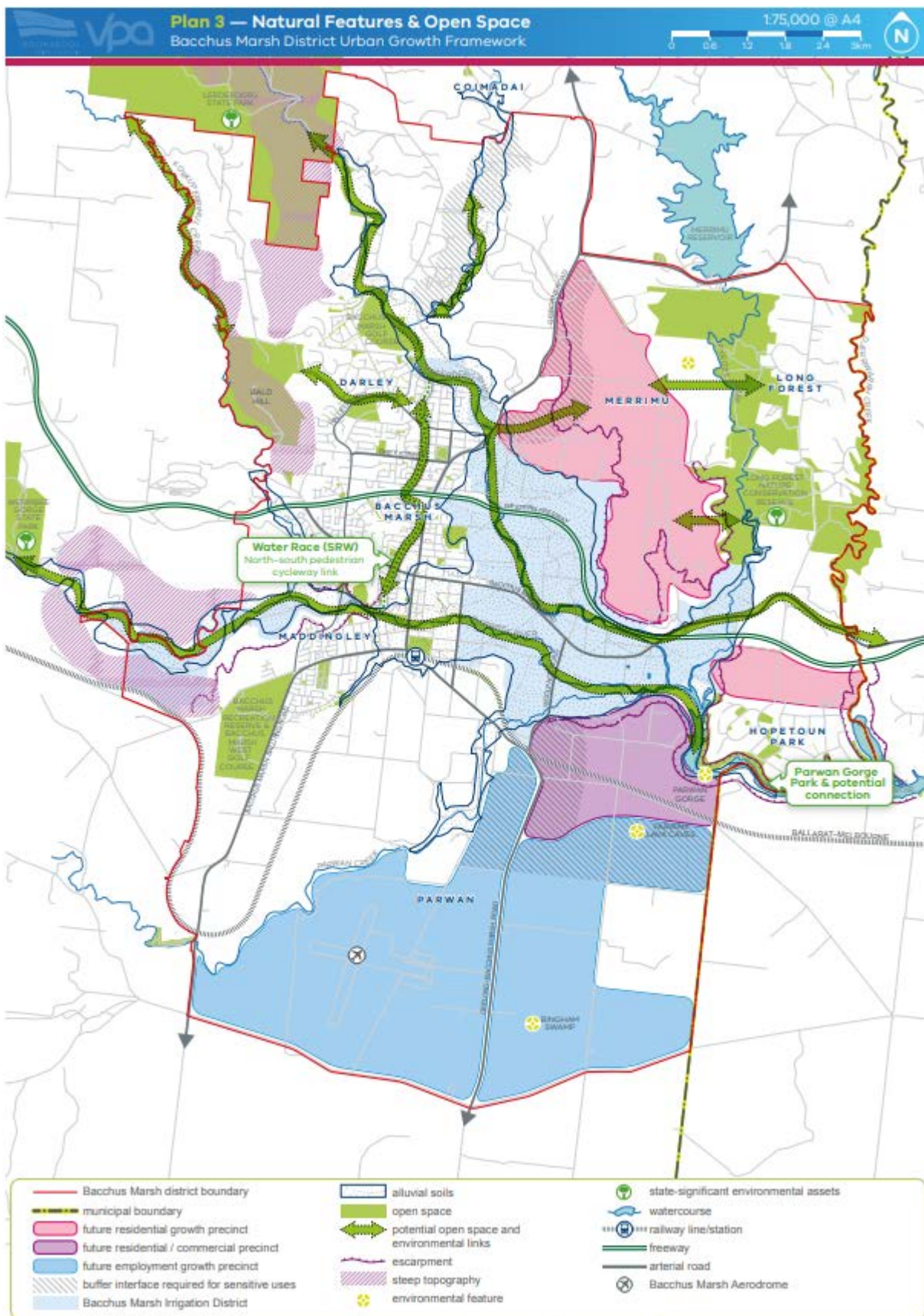
Key issues that the strategy needs to address include:

- Inconsistency between existing Council documents relating to the planning for and maintenance of open space
- Accessibility requirements to open space network via existing shared path network and identification of areas of under/oversupply
- Lack of an open space masterplan development program
- Lack of guidance relating to the provision of and accessibility to open space in greenfield developments
- Lack of guidance relating to
 - Waterways and biolinks
 - Formal and informal play
 - Protection and enhancement of biodiversity values
 - Climate change adaptation / sustainability
 - Escarpments and encumbered open space

The final strategy should provide Council with:

- Identification of Shire Wide Open Space hierarchy
- Development of standards in relation to assets and components reserves should contain based on hierarchy; such as seating, irrigation, all abilities access and informal/formal playspaces, BBQs, public toilets, etc, including baseline square metre rates for delivery of new capital open space projects and asset renewal
- A plan to address equitable distribution of open space across the Shire (gap analysis) including existing assets, purchase or disposal of open space to meet these goals (e.g. cash contribution for improvements or land acquisition)
- Identification of open space needs in Greenfield / new development areas, including dimension requirements (e.g. minimum size and shape)
- Assessment and mapping of existing open space that meets / does not meet the hierarchy requirements and development of a reserve specific improvement plan as a separate document
- Implementation Plan: urgent (0-1 year), short (1-5 year), medium/long (5-10 years), with budget estimates for proposed actions and review process. The implementation plan should include any proposed planning scheme amendment/s required to implement the strategy.

We would encourage Consultants to identify other opportunities as part of your submission.



MAP 2: Bacchus Marsh Urban Growth Framework (Natural Features & Open Space)

Scope of Quote

The scope will be delivered in the phases as outlined below

In preparing the quote, consideration should be given to how the delivery of the strategy will best address the issues and opportunities for open space planning through Precinct Structure Plans and Development Plans (greenfield development) and the existing suburbs and towns.

Phase 1: Background assessment and stakeholder engagement

- *Components*
 - *PCG workshop*
 - *Stakeholder engagement*
 - *Review of existing Council and State strategies, including Bacchus Marsh & Ballan Open Space Framework, Community Infrastructure Framework, Open Space Maintenance Management Plan and the Open Space Asset Data Collection & Condition Audit*
 - *Review existing inventory of open space reserves across the municipality including Council and DELWP owned reserves and facilities.*
 - *Review existing open space network, including accessibility via existing shared path network and identification of areas of under/oversupply*
 - *Review of how technology is being used to monitor, map and respond to open space planning and maintenance in other Councils or similar organisations (ie LoRaWAN)*
 - *Review current and proposed masterplan list*
 - *Identification of how each reserve meets the standards and recommendations for solutions*
 - *Incorporate results from Open Space Asset data collection (due to be undertaken by Assets in 2020)*

- *Outputs*
 - *Summary of current and future supply and demand requirements*
 - *Identification of initial potential issues and opportunities*
 - *High level assessment of potential interventions and actions*
 - *Stakeholder engagement plan*

Phase 2: Draft report

- *Components*
 - *PCG workshop*
 - *Development of proposed interventions to respond to current and future supply and demand requirements*
 - *Intervention delivery timelines and costings*
 - *Agency engagement*
 - *Stakeholder engagement*

- *Outputs*
 - *Draft report for comment*

Phase 3: Final report

- *Components*
 - *Review of feedback from consultation*
 - *PCG workshop*

- *Outputs*
 - *Completion of Final report including 10 year implementation plan*

Reference to Other Documents (to be provided on appointment of the successful consultant)

Appendix 01: *Bacchus Marsh Urban Growth Framework*

Appendix 02: *Ballan Strategic Directions*

Appendix 03: *Small Towns and Settlements Strategy*

Appendix 04: *Bacchus Marsh & Ballan Open Space Framework*

Appendix 05: *Moorabool Open Space Asset Management Plan*

Appendix 06: *Moorabool Open Space Maintenance Management Plan*

Appendix 06: *Community Infrastructure Framework*

Appendix 07: *Bacchus Marsh Integrated Transport Strategy*

Appendix 08: *Recreation & Leisure Strategy 2015-2021 (Vol 1-3)*

Appendix 09: *Moorabool Hike & Bike Strategy*

Consultants should also note that Council is currently undertaking an Open Space Asset Data Collection & Condition Audit which is scheduled to be completed in early – mid October which will provide an updated assessment of Council's asset and GIS data as it relates to open space.