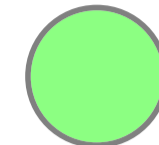

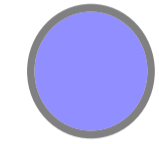
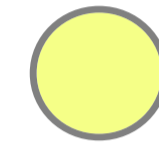





MYRNIONG MASTER PLAN

LEGEND

-  STEP UPGRADE AREA
-  FUTURE CIP UPGRADE INVESTIAGTION AREA
-  GATEWAY FRAMEWORK UPGRADE AREA
-  DEECA - COMMITTEE OF MANAGEMENT UPGRADE AREA
-  TREE PLANTING UPGRADE AREA
-  FOOTPATH UPGRADE AREA
-  WALKING TRAIL UPGRADE AREA

AVENUE OF HONOUR



- Secondary entry of the town through West
- Fill the gap planting
- Potential connection to Main Road tree avenue

JIM BARRY RESERVE



- Infill planting
- Maintenance
- Possible footpath link to War Memorial.

SHORT STREET

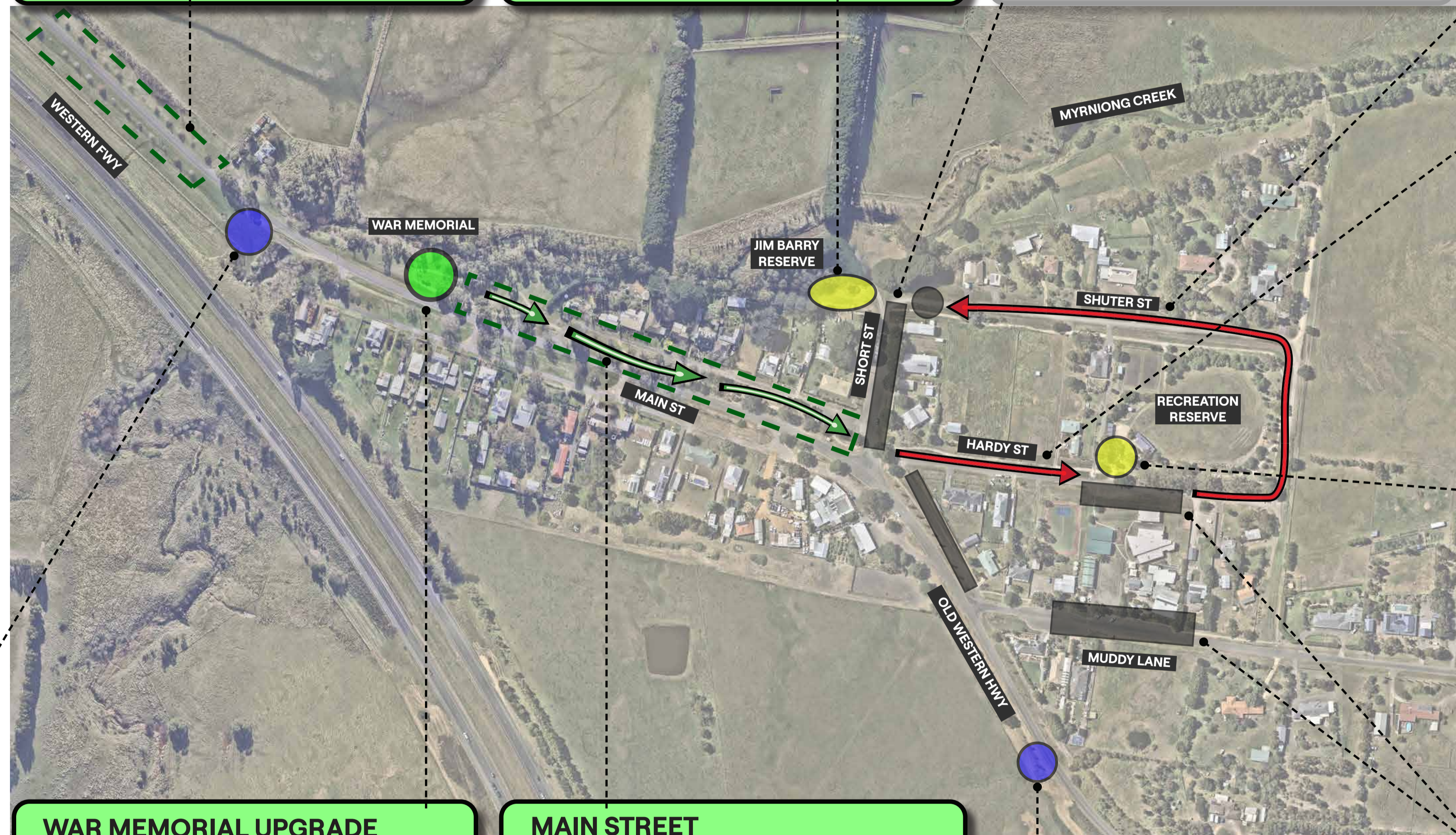


- Concrete footpath connection from CFA to Shuter Street.
- Repair existing kerb & channel
- Formalizing pram ramp crossing

SHUTER STREET



- Footpath upgrade, council to investigate most suitable options
- Lawn areas to be redressed and restabilized.
- Investigate drainage upgarde area



HARDY STREET



- Footpath connection from Short St to Primary school.
- Lawn areas to be redressed and restabilized.

RECREATION RESERVE



- Entrance landscape elements upgrade - DEECA

WESTERN TOWN ENTRY SIGN



- Type B "Welcome to Myrniong" signage to be installed based on "Gateway Framework"
- Potential landscape elements upgarde and maintenance

WAR MEMORIAL UPGRADE




- Upgrade includes planting, furniture, pavement, art, signage into township.
- Path leading through Main road into war memorial.

MAIN STREET



- Fill the gap planting - replace any low priority or poor health trees
- Footpath upgrade, council to investigate most suitable options

PICTURE FRAME SIGNAGE



- Undertake a condition assessment.
- Add into yearly maintenance schedule.

PRIMARY SCHOOL CAR PARKING



- Investigate additional car parking space on Muddy Lane & Hardy Street