

**Large-scale Mural/Artwork**

Following relocation of the existing Bottle Trees to another park as part of DoT's signalisation project, the wall of Lola's Cafe will be investigated as a site for a large-scale artwork with heritage theme.

**Courthouse Place**

Refer to Courthouse Place Sketch Options for detail.

**Proposed Elm Trees**

Chinese Elm (*Ulmus parvifolia*) to be planted in cutouts within parking lane, with gravel surface flush with road levels and cycle loops to protect trees & provide cycle parking.

**Footpaths**

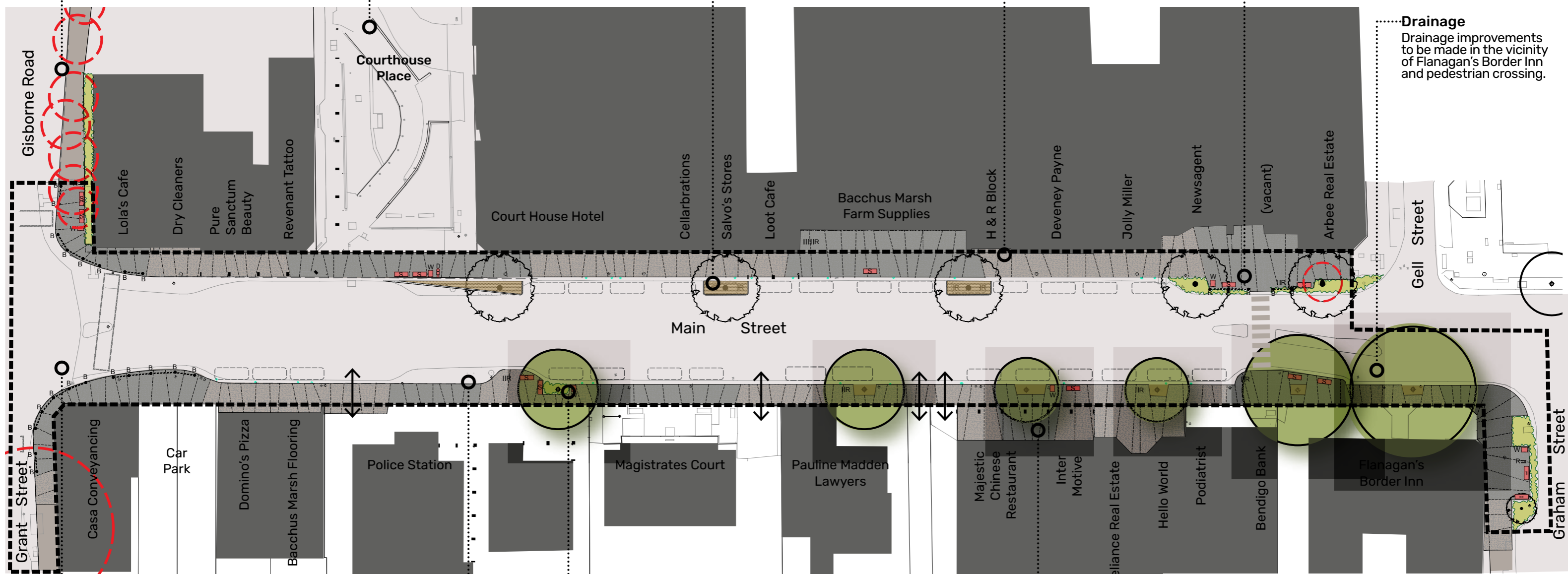
Footpaths to be reconstructed with exposed aggregate concrete, with decorative sawcut joints, similar to previous Main St Streetscape Upgrade stages.

**Furniture**

New seats & bin enclosures to be installed, matching previous Main St Streetscape Upgrade stages. Pedestrian barrier fencing to be commercial quality (ARC Ambassador or approved equiv), upgraded from previous stages.

**Drainage**

Drainage improvements to be made in the vicinity of Flanagan's Border Inn and pedestrian crossing.



**Intersection Works**

Signalised intersection to be installed by DoT, with footpath treatment to match proposed Stage 4 Streetscaping.

**Seating Nodes**

Existing pedestrian crossing to be removed and kerb outstands modified as part of DoT intersection works.

**Existing Plane Trees**

Existing trees to be protected and retained, but will be subject to future investigation and public consultation regarding potential replacement with Chinese Elms.

**Uniform Pavement Treatment**

Where building frontages are set back from the property line, proposed footpath pavement treatment is proposed to extend to the building line, subject to approval and contribution of property owners.

**LEGEND**

- Existing tree: To be retained and protected during construction.
- Existing tree: To be removed prior to construction.
- Proposed tree: Refer Planting Schedule, Details &/or Specifications.
- Groundcovers
- Exposed aggregate concrete footpath: 'Darley' mix
- Exposed aggregate concrete footpath: 'Milkyway' mix
- Pavement Joints
- Gravel
- Waste Receptacle 240 Litter bin.
- Seat Type 1 Furphy 'Promenade'
- Bicycle Rack: Stainless steel loop
- Drinking Fountain Furphy 'Sandford'
- Bollard to match existing: Steel, angled top, black
- Pedestrian Barrier: Tubular steel pickets, black.
- Vehicle access crossing.

**Furniture & Materials**



**CONCEPT PLAN**  
**MAIN ST STREETScape UPGRADE STAGE 4**  
**Bacchus Marsh**

PRELIMINARY - FOR DISCUSSION

0 5 10 20

N

DRAWING #: 2145 LC01 REV C DATE: 29/04/22 SCALE: 1:500 @ A3

Perry Mills & Associates  
 Landscape Architecture  
 www.perrymills.com.au

2145 Bacchus Marsh St 4



**Footpath Connection**  
Clearly-articulated pedestrian connections to retail areas and historic buildings to the North.

**Bicycle Parking**  
Stainless steel bike racks.

**Feature Paving**  
Footpath design to match architectural paving design used along Main Street.

**Existing Jacaranda**  
Tree retained.

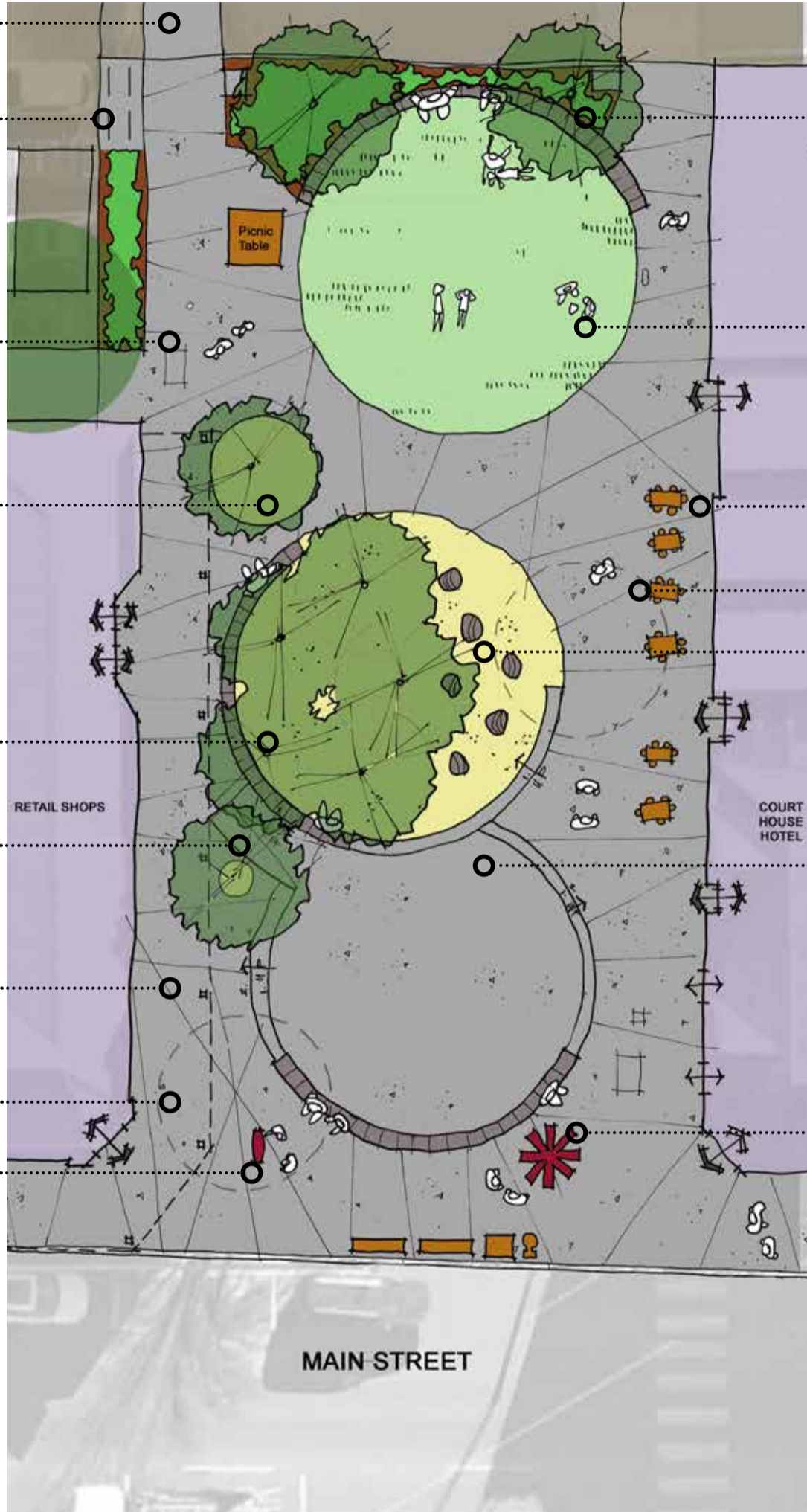
**Jacaranda Multi-use Space**  
Gravel-surfaced area under the canopy of existing Jacaranda trees provides opportunities for informal seating and play.

**Access Ramp**  
All areas to be fully accessible to all.

**Existing Community Art Plaques**  
Existing mosaic pavers set into the pavement could be relocated to a variety of locations within the project, set into the concrete pavement in a group

**Existing Tree**  
Existing Ornamental Pear to be removed.

**Wayfinding Signage**  
Map and direction signage with potential interactive digital links.



**Planting and Sitting Wall**  
Garden bed and masonry sitting wall, constructed of 2nd-hand heritage bricks with sawn bluestone capping, creates spatial definition from carpark to the north.

**Grassed Lawn**  
Flat, irrigated quality turf lawn area provides green space for casual recreation, seating, picnics etc.

**Alfresco Dining**  
Existing Courthouse Hotel alfresco area relocated to building line.

**Existing Tree**  
Existing Ornamental Pear to be removed.

**Sculpture Boulders**  
Bluestone field rock, characteristic of the Bacchus Marsh region, potentially featuring carved motifs inspired by waterways.

**Sunken Meeting Space**  
Paved area set below the general pavement level creates an inward-looking space acknowledging the bowl-like landscape setting of Bacchus Marsh (subject to levels of existing underground services).

**Large-scale Sculpture**  
Potential future large-scale vertical sculptural element, a landmark visible to travellers along Main Street.

**DESIGN AIMS**

- Create three distinct spaces:
  - a meeting space in the area of highest pedestrian traffic, adjacent to Main St
  - a space for sitting under the canopy of the Jacaranda trees
  - a piece of green at the northern end where pedestrian traffic is less, in full sun

Maintain pedestrian permeability along the building lines - what used to be the footpath - to facilitate linkages to the North.

Use circular shapes and subtle changes in level to focus the spaces inward.

Retain existing Jacaranda trees.

Use natural materials - bluestone, gravel, pebble aggregates - along with traditional building materials - brick, shaped or sawn stone.

**COURTHOUSE PLACE SKETCH OPTION 1**

**MAIN ST STREETScape UPGRADE STAGE 4**

**Bacchus Marsh**

PRELIMINARY - FOR DISCUSSION



**Perry Mills & Associates**  
Landscape Architecture  
www.perrymills.com.au

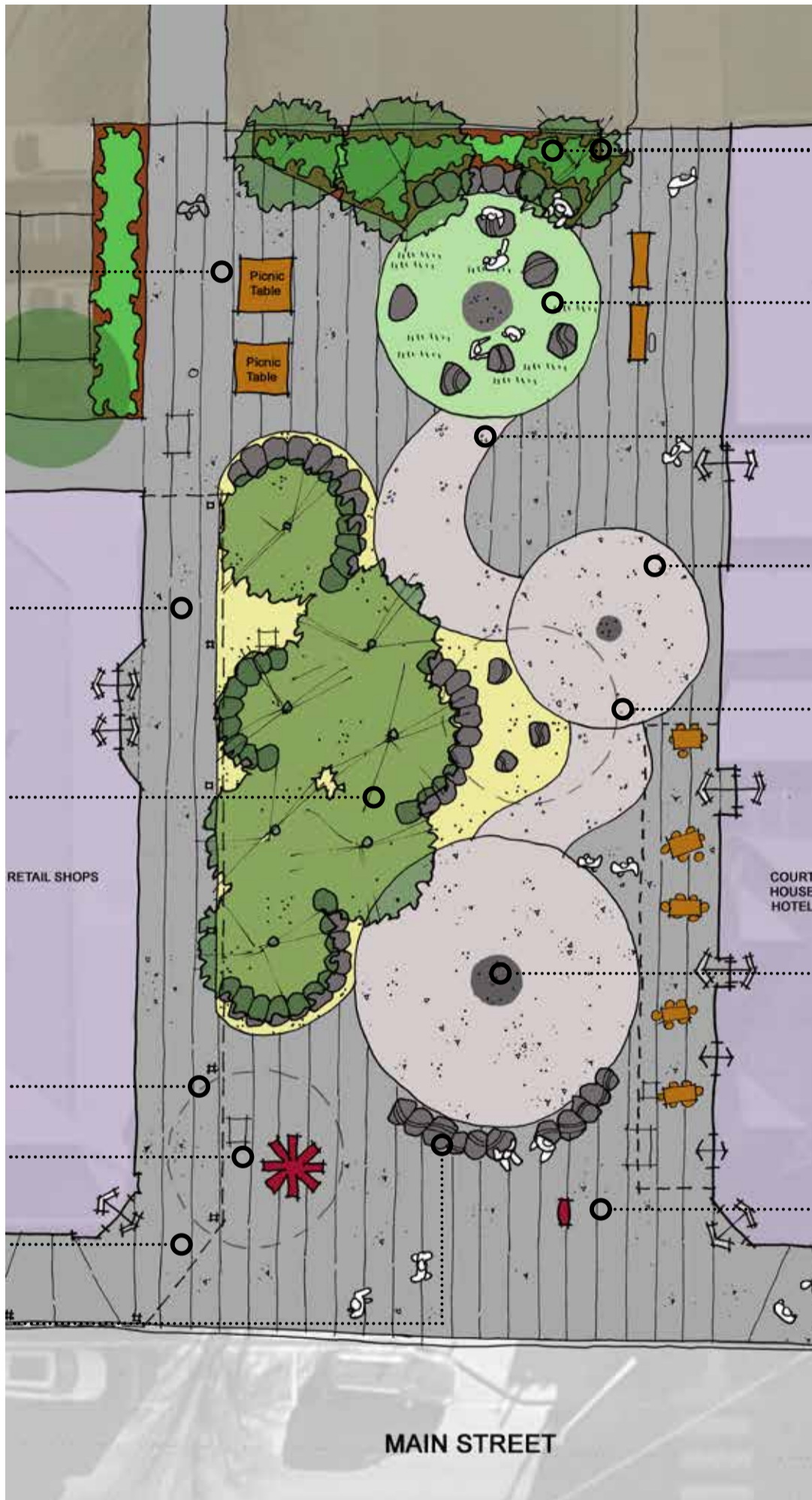


DRAWING #: 2145 LSK02  
REV: C

DATE: 29/04/22

SCALE: 1:200 @ A3





**Furniture**

Furniture style to be sympathetic to cultural history theme - potentially could be heritage styled, or custom seats with traditional materials or design motifs.

**Feature Paving**

Alternating paving pattern reflects the orderly linear pattern of agricultural landscape in the Bacchus Marsh bowl - linear orchards and crops.

**Stone Seating Nooks**

Intimate seating areas under Jacaranda trees, created from bluestone fieldstone rocks with sawn sides to carefully butt-joint them together into a unified element - could be interpreted as a caterpillar or perhaps an exposed rock reef in a river.

**Existing Tree**

Existing Ornamental Pear to be removed.

**Large-scale Sculpture**

Potential future large-scale vertical sculptural element, as noted in Option 1.

**Existing Community Art Plaques**

Existing mosaic pavers set into the pavement, as noted in Option 1.

**Boulder Sitting Wall**

Bluestone boulders with crafted surfaces provide informal seating and play elements fronting to Main Street. Surface motifs potentially carved into smoothed surfaces of the rocks representing waterways, wetlands and local animals.

**Planting and Sitting Wall**

Garden bed and stone seating wall create spatial definition from carpark to the north.

**Grassed Play Space**

Grassed or impact absorbent play area with low rubber-surfaced rocks to balance on.

**Meandering Paving**

Sweeping paving element with exposed pebble finish representing waterways - the Werribee and Lerderderg Rivers.

**Paving Ponds**

Paved circles of alternating concrete finishes, potentially with a variety of materials embedded into the surface representing epochs of culture and history - bone, shells, metals, ceramics, and plastics.

**Existing Tree**

Existing Ornamental Pear to be removed.

**Possible Future Art Opportunity**

Centres of circular paving space to be left blank for possible future art installations.

**Wayfinding Signage**

Map and direction signage, as noted in Option 1.

**DESIGN AIMS**

Create small, enclosed areas under the existing Jacaranda trees, fronting and looking out to the larger open paved area.

Use water as a theme for interpretation of the local landscape.

Use artworks to reflect the history of the locality and communities of Bacchus Marsh.

Use elements that invite play to encourage use of the space by children as well as adults, helping to create a place that will draw people in and be an active space.

Create opportunities for potential future artwork referencing the shared landscapes and cultures of Bacchus Marsh.

Retain existing Jacaranda trees.

Use natural materials - bluestone, gravel, as well as concrete, and native and indigenous plants

**COURTHOUSE PLACE SKETCH OPTION 2**

**MAIN ST STREETScape UPGRADE STAGE 4**

**Bacchus Marsh**

PRELIMINARY - FOR DISCUSSION



**Perry Mills**  
& Associates  
Landscape Architecture  
www.perrymills.com.au



DRAWING #: REV  
2145 LSK03 C

DATE:  
03/05/22

SCALE  
1:200 @ A3