

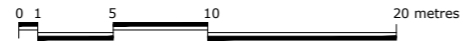
**Project Background**

In recent decades Gordon has experienced rapid population growth and urban development, leading to greater demand on public recreation and open space facilities.

Moorabool Shire has identified Gordon Public Park as a target for investment in upgraded public amenity. It is planned that landscaping works will be undertaken over a number of years, subject to funding.



- Pedestrian access network**  
 Site development should encourage pedestrian/cycle access. Currently access to the site is generally by vehicle, as the formal pathway network does not reach the site. Future pathway works will most likely extend the existing path along the north side of Main St.
- Main Street frontage**  
 The setback from Main Street has a number of attractive mature trees. The Eucalypt tree at the NE corner is particularly prominent, and could be incorporated into entry landscaping with identity signage at the street corner.
- Tennis courts**  
 Recently upgraded tennis courts are used by the active Gordon Tennis Club, by members of the tennis club.
- Stanley Street**  
 Stanley St is unformed, with open swale drain that limits carparking opportunities
- Old court**  
 The old asphalt-paved court is cracked and weedy, but offers a level area for landscaping or future expansion of courts.
- Sloping grass areas**  
 Grassed areas around the building are not level, do not provide easy access to and between buildings and limit usability.
- Drinking fountain**  
 DDA compliant fountain that is not wheelchair accessible.
- Pavilion**  
 Brick pavilion is used by the tennis club and for craft groups. There is potential for the facility to be used by a greater number of community groups, but accessibility is poor.  
 The building exhibits a number of defects including footing subsidence that requires investigation and repair. There is no pathway connection and no disabled access.
- Toilets**  
 Toilet facility is functional but aged and unappealing.
- Playground**  
 Aged timber play structure lacks integration with wider landscape thus limiting more creative play activities.
- Existing trees**  
 Existing Boobiolla (west boundary) and Bracelet Honey-Myrtle (south boundary) trees have recently been cleaned up and now offer opportunity to be used as play elements.



**SITE ANALYSIS**

**GORDON PUBLIC PARK**  
 Stanley St, Gordon



DRAWING #: 2034 LMP01  
 REV A  
 DATE: Dec 2020  
 SCALE 1:400 @ A3







**Design Objectives**

- Identify opportunities for ongoing development of the facility, over time as funds become available;
- Maximise opportunities for social connection, active and passive recreation, and play;
- Provide all-abilities access to the site and the pavilion by constructing a concrete ramp (max 1 in 20 grade);
- Upgrade the playground, including more 'nature-based' play elements and possible replacement of the existing play structure;
- Formalise car parking arrangements to maximise usability of the site for a variety of purposes;
- Replace existing furniture and BBQ;
- Maintain potential for a 3rd tennis court, while providing courts for complementary informal active recreation in the medium term;
- Improve recognition of the site by constructing destination signage on the corner of Main St and Stanley St;
- Plant more shade trees to mitigate climate change and the urban heat-island effect;

- Future footpath**  
Possible location of future path network.
- Signage**  
Curved masonry wall with identity signage and planting around existing tree.
- Parking**  
Replace existing table drain underground, and construct gravel car parks.
- Informal active play**  
Upgrade surface and linemark as necessary for casual ball sports, including a blockwork tennis hit-up wall.
- Tree planting**  
Deciduous street trees along Stanley St and a tall landmark tree (eg Queensland Bottle Tree, Brachychiton rupestris) to indicate the entry point.
- Concrete walkway**  
Sloping walkway provides DDA compliant access to the pavilion and terrace area, Note that 1 in 20 grade requires no handrail or kerbing.
- Retaining wall**  
Concrete or gabion retaining wall creates terrace area level with pavilion entry. Paved or gravel surfaced terrace area with seats, tables and BBQ.
- Replace ramp access**  
Construct deck or terrace to access doorway, connecting to existing verandah.
- Pavilion**  
Undertake building condition report to identify structural issues, repair options and cost estimates
- Playground**  
Undertake safety audit of existing play structure. Relocate or install new structure closer to Boobialla tree canopy to provide natural shade (avoiding requirement for artificial shade structure). Provide landscaping with rocks, logs and trees. Investigate potential for slack-rope course between existing Bracelet Honey-Myrtles.
- Potential car parking**  
Onsite carpark proposed for use of park and tennis club, but potential offsite carpark on Urquhart St for approx 6 cars (note grades/drainage).
- Tree planting**  
Identify opportunities for additional tree planting throughout the site and adjacent road reserves where practical.

**SKETCH PLAN**

**GORDON PUBLIC PARK**  
Stanley St, Gordon



DRAWING #: 2034 LMP02  
REV B  
DATE: March 2021  
SCALE 1:400 @ A3





**Design Objectives**

- Identify opportunities for ongoing development of the facility, over time as funds become available;
- Maximise opportunities for social connection, active and passive recreation, and play;
- Provide all-abilities access to the site and the pavilion by constructing a concrete ramp (max 1 in 20 grade);
- Upgrade the playground, including more 'nature-based' play elements and possible replacement of the existing play structure;
- Formalise car parking arrangements to maximise usability of the site for a variety of purposes;
- Replace existing furniture and BBQ;
- Provide a skate facility and complementary informal active recreation courts (eg 3x3) in the short term;
- Improve recognition of the site by constructing destination signage on the corner of Main St and Stanley St;
- Plant more shade trees to mitigate climate change and the urban heat-island effect;

**KEY**

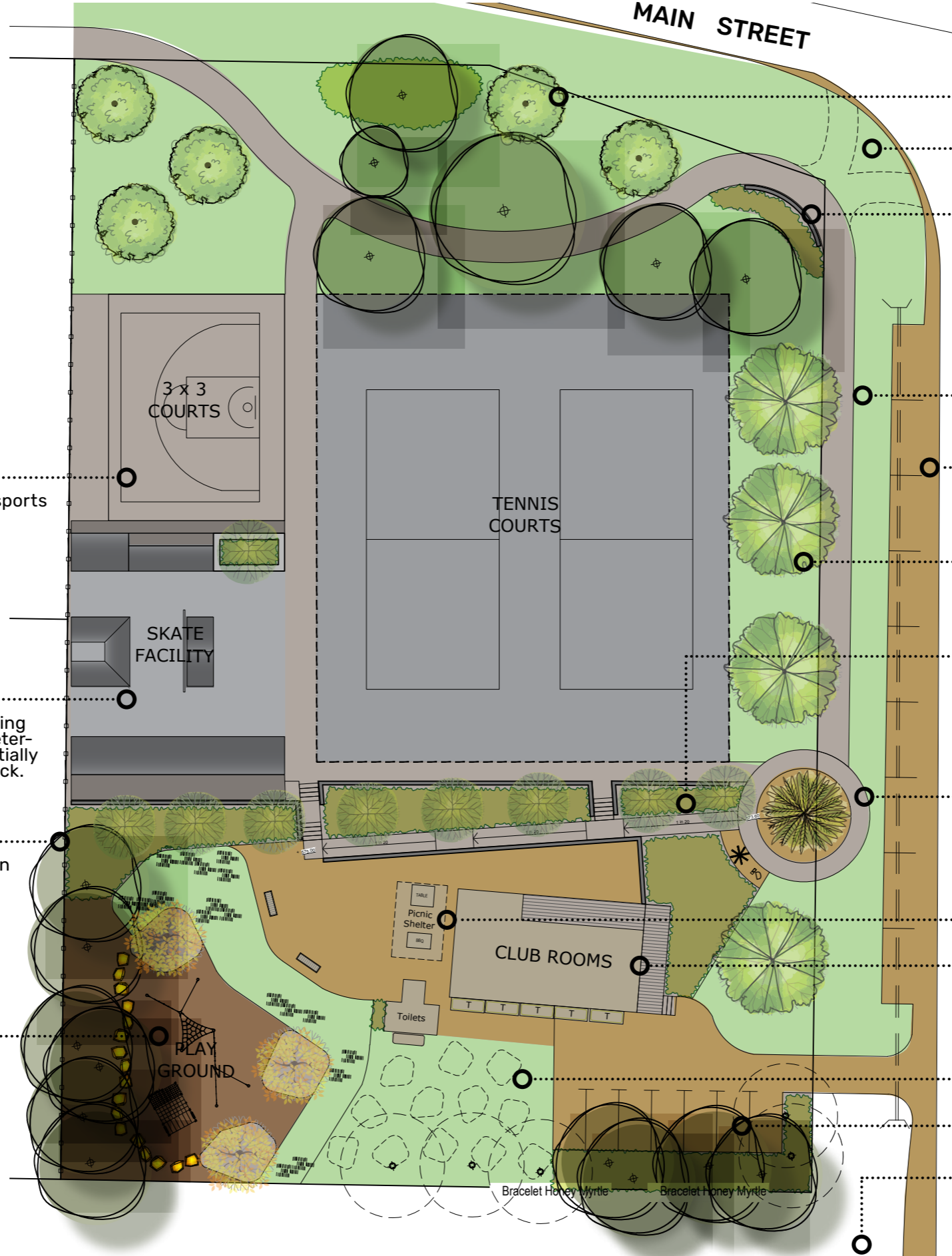
- Existing Tree
- Proposed Trees:
  - Native Tree (eg Lemon-scented Gum)
  - Landmark Tree (eg Norfolk Is Pine, Black Kurrajong)
  - Deciduous (eg: Autumn Blaze Maple)
  - Deciduous (eg: Austral Nettle)
  - Deciduous (eg: Crepe Myrtle)
  - Low Shrubs & Groundcovers
- Existing Grass
- Turf Grass
- Softfall Mulch
- Granitic Gravel
- Concrete Path
- Community Noticeboard
- Drinking Fountain
- Concrete Retaining Wall
- Colorbond Fence

**Informal active play**  
Provide space for casual ball sports (eg 3x3 basketball).

**Street Skate Facility**  
Provide a skate facility (following community consultation to determine preferred design), potentially similar to skate park at Creswick.

**Boundary Fence**  
Construct fence along western boundary, eg colourbond.

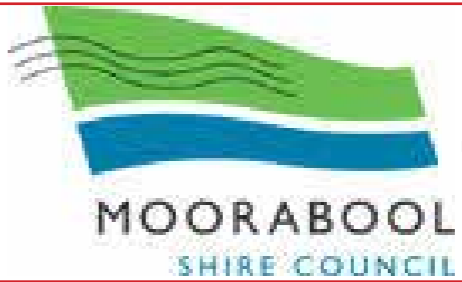
**Playground**  
Replace play structures over time, located in shade of existing Boobialla trees and proposed additional trees.  
Provide natural landscaping elements such as rocks, logs and plants.



- Tree Planting**  
Additional trees planted along Main St frontage.
- Future footpath**  
Possible location of future path network.
- Signage**  
Curved masonry wall with identity signage and planting around existing tree.
- Concrete Footpath**  
A 2.5m-wide concrete footpath provides circulation around the site and links with the future path network.
- Parking**  
Replace existing table drain underground, and formalise gravel car parks (approx 9no).
- Tree planting**  
Deciduous street trees (Autumn Blaze Maples) along Stanley St provide a windbreak, summer shade and autumn leaf colour.
- Retaining Walls & Concrete Walkway**  
Concrete or gabion retaining walls create terraced area level with pavilion entry overlooking tennis courts. Sloping walkway (1 in 20 grade) provides DDA-compliant access to the pavilion and terrace area. Embankments planted with small deciduous trees (Crepe Myrtle) and low groundcovers.
- Landmark Entry Node**  
Circular path with tall landmark tree indicates the entry point, with community noticeboard and drinking fountain and space for a seat or signage. eg Queensland Bottle Tree or Norfolk Island Pine
- Picnic Shelter**  
Picnic shelter with new seats, tables and BBQ.
- Pavilion**  
Construct deck between carpark entry and existing verandah with steps or DDA compliant ramp access. Undertake building condition report (including toilet facility) to identify structural issues, repair options and cost estimates.
- Community Garden**  
Potential location for Community Garden
- Car Parking**  
Onsite carpark for use of park and tennis club (7no).
- Urquhart St Road Reserve**  
Identify opportunities for additional tree planting, expanded community garden, and/or additional car parking within adjacent road reserves.

**LANDSCAPE CONCEPT PLAN**

**GORDON PUBLIC PARK**  
Stanley St, Gordon



DRAWING #: 2034 LMP03  
REV A  
DATE: April 2021  
SCALE 1:500 @ A3





**Deciduous trees**



**Austral Nettle - *Celtis australis***



**Autumn Blaze Maple - *Acer freemannii* 'Autumn Blaze'**

**Evergreen Trees**



**Dwarf Lemon-scented Gum - *Corymbia citriodora* 'Scentuous'**



**Black Kurrajong - *Brachychiton populneus***

**PLANTING PALETTE**

BOTANICAL NAME	COMMON NAME	H X W (m)
<b>EVERGREEN TREES</b>		
<i>Araucaria heterophylla</i>	Norfolk Island Pine	20-35 x 10-15
<i>Brachychiton rupestris</i>	Queensland Bottle Tree	15 x 5
<i>Corymbia citriodora</i> 'Scentuous'	Dwarf Lemon-scented Gum	7 x 3-5
<b>DECIDUOUS TREES</b>		
<i>Acer freemannii</i> 'Jeffersred/Autumn Blaze'	Autumn Blaze Maple	13 x 10
<i>Celtis australis</i>	Austral Nettle, Mediterranean Hackberry	11 x 10
<i>Lagerstroemia indica</i> 'Tuscarora'	Crepe Myrtle (Hot Pink)	6 x 6
<b>GROUNDCOVERS PLANTS</b>		
<i>Ficinia nodosa</i>	Knobby Club Rush	0.75 x 0.5
<i>Lomandra longifolia</i> 'Tanika'	Tanika	0.5-0.6 x 0.65
<i>Miscanthus sinensis</i> 'Adagio'	Dwarf Evergreen Feather Grass	0.8 (1.4) x 0.9
<i>Nandina domestica</i> 'Murasaki Flirt'	Dwarf Sacred Heavenly Bamboo	0.3-0.4 x 0.3-0.6
<i>Rhagodia spinesens</i> 'Silver Border'	Silver Salt Bush	0.5-1.0 x 1.0-2.0
<i>Rosmarinus officinalis</i> 'Prostrate'	Weeping Rosemary	0.2 x 1.0
<i>Westringia fruticosa</i> 'Mundi'	Prostrate Native Rosemary	0.4 x 1.5
<b>PLAYGROUND PLANTS</b>		
<i>Elegia</i> (syn. <i>Chodropetalum</i> ) <i>capensis</i>	Horsetail Restio	1.8 x 1.0
<i>Pennisetum alopecuroides</i> 'Nafray'	Nafray Fountain Grass	0.5 x 0.5
<i>Lomandra longifolia</i> 'Verday'	Verday Lomandra	0.5-0.6 x 0.5-0.6



**Crepe Myrtle - *Lagerstroemia indica* 'Tuscarora'**



**Norfolk Island Pine - *Araucaria heterophylla***

**Groundcovers**



**Westringia 'Mundi'**



**Lomandra 'Tanika'**



**Rhagodia 'Silver Border'**



**Knobby Club Rush**

**PLANT MATERIALS**

**GORDON PUBLIC PARK  
Stanley St, Gordon**



2034 LMP04  
REV A  
DATE: Apr 2021  
SCALE NTS





**Casual Recreation**



**Playground - Natural materials**



**Rope Climber - example**



**Climbing Cube - example**



**Street Skate facility - Creswick Skate Park**



**3x3 Basketball**

**Furniture**



**Picnic setting - Furphy Metro style**



**Litter receptacle - Furphy Avenue style**



**Bench seat with arms - Furphy Metro style**

**Shelter**



**Picnic shelter - eg Furphy 6x4m Provincial Shelter  
Retaining walls & walkway**



**Off-form poured concrete**



**Western boundary fence- Colorbond with timber posts**



**Locally sourced gravel**



**Grass play area - Kikuyu**



**Trowel-finish concrete**

**MATERIALS**

**GORDON PUBLIC PARK  
Stanley St, Gordon**



DRAWING #: 2034 LMP05  
REV A  
DATE: APRIL 2021  
SCALE nts

